

1- Samples of foliage from each decade between 1170 and 1240.



2 - Typical formal foliage, from Senlis nave aisle 1155±.



3 - Typical natural foliage from Chartres ambulatory 1203



4 - Saint-Germer-de-Fly clerestory walkway 1150s
WHICH WOULD YOU PREFER?



5 - Chars interior



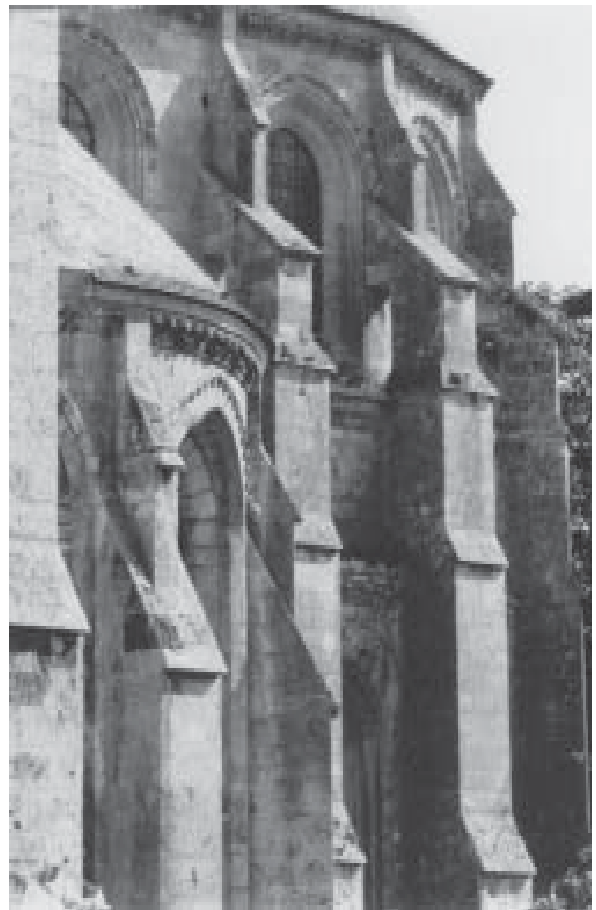
6 - Paris, Notre-Dame nave to east begun 1190s



7 - Champigny-sur-Marne nave interior 1220s



8 - Braine interior to north-east begun 1176±



9 - Braine apse with recession in clerestory 1180s



10 - Soissons cathedral tall clerestory 1192±



11 - Orbais clerestory complete before 1203



12 - Moret-sur-Loing choir 1190s



13 - Longpont nave, choir begun 1180s



14 - Soissons cathedral south transept begun 1178±



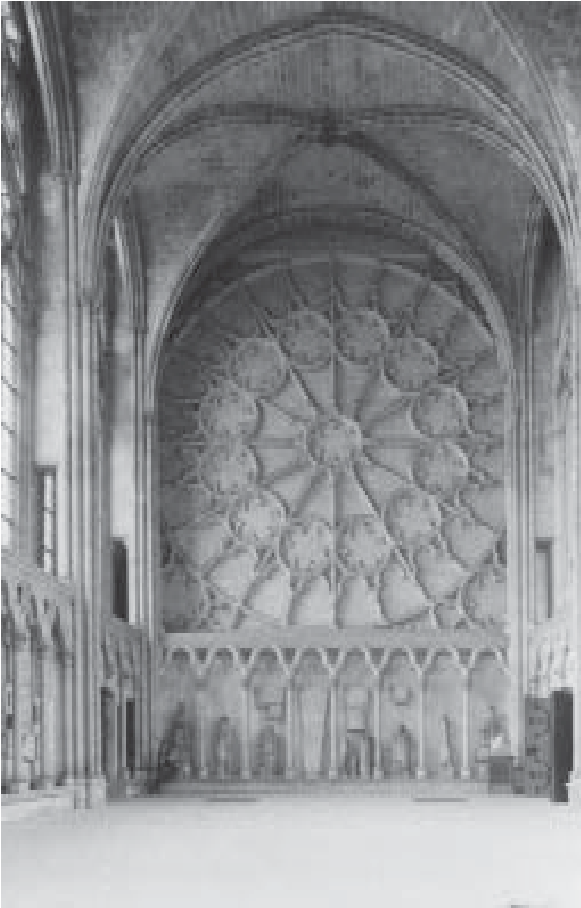
15 - Saint-Remi axial chapel begun 1165±



16 - Ruins of Preully choir 1160s



17 - Laon cathedral dado capital inside western porches early 1180s



18 - Saint-Germain-en-Laye interior, completed 1238



19 - Essômes-sur-Marne south transept wall 1210±



20 - Vaudoy apse 1215±